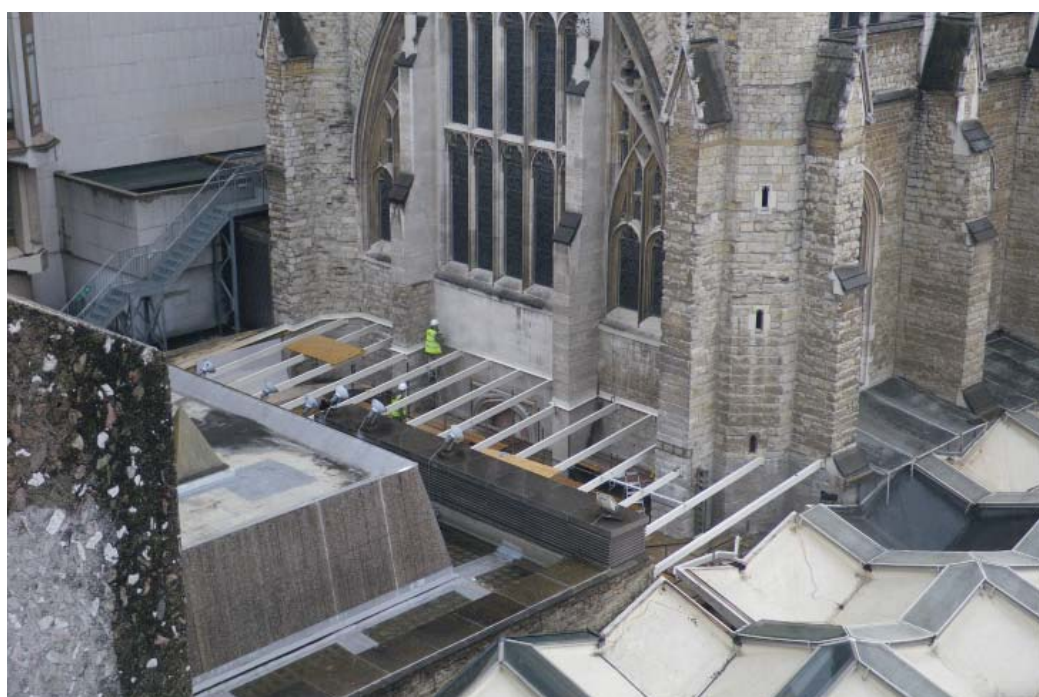


GUILDHALL WEST AMBULATORY

Progress week 6



This week we have brought the crane into the yard after preparing a load bearing base.

We have lifted into place brackets which are now fixed to the walls and also the roof support beams. All beams are in place.

The works are being managed by

Richard Litherland (ext. 3563)
Richard Joyner (ext. 1740)
City Surveyor's Department.

