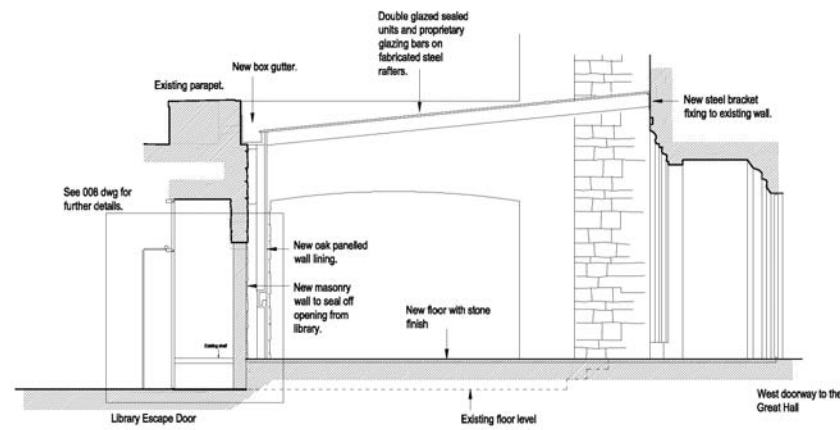


Section CC As Proposed

## GUILDHALL WEST AMBULATORY Progress week 2

Progress has slowed down on site because of the Gladiator's event in the yard, but work is still continuing at the metal fabricaitons work shop. The steel brackets and beams which are required for structural support are being manufactured by Firmans at Romford, Essex.

There are 30 brackets for the 15 beams spanning between the Guildhall Library and the Great Hall.



Section AA As Proposed



The works are being managed by

**Richard Litherland (ext. 3563)**  
**Richard Joyner (ext. 1740)**  
 City Surveyor's Department.

